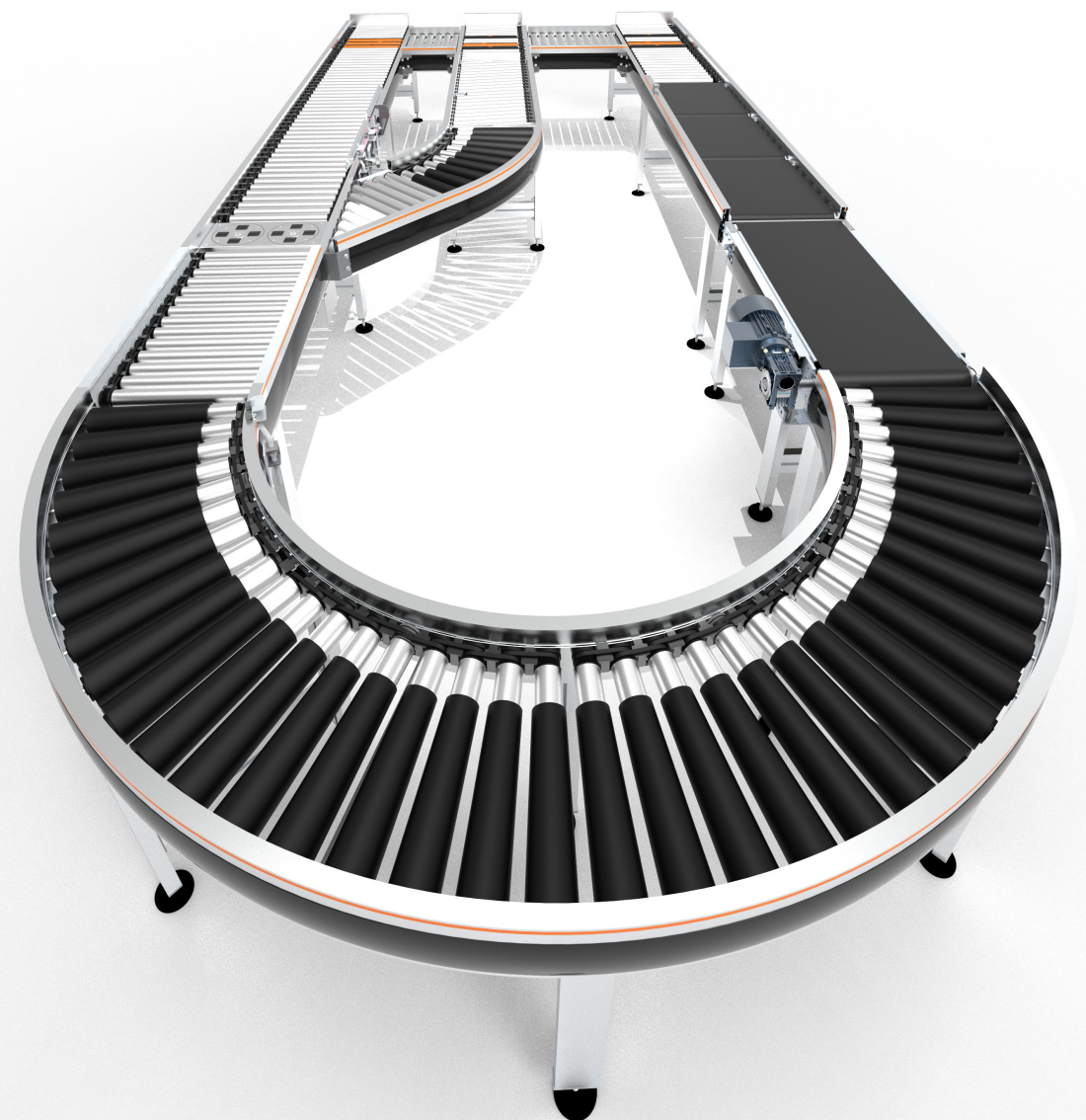


CODIMAR MODULAR INTRALOGISTICS



Codimar
Polígono Huerto del Francés
P.O. BOX 177
14500 Puente Genil (Córdoba)
SPAIN
+34 957617563
info@rodilloscodimar.com



"Helping Your Move"



Modular
IMC

Codimar's IMC modules are pre-assembled conveyors. The roller and elevator control system is included in the prototypes. The client makes the "turnkey" installation, assembly, PLC control system, code readers, weighing and labeling of products.

One Line Custom Design
complete intralogistics.

Classifier or sorter's detail.
The boxes are distributed to the
operators
to prepare orders.

Product entry to the classifier
and output of rejected products
automatically.

Dosage and feeding of product to
robotic cells of palletizing.

CODIMAR

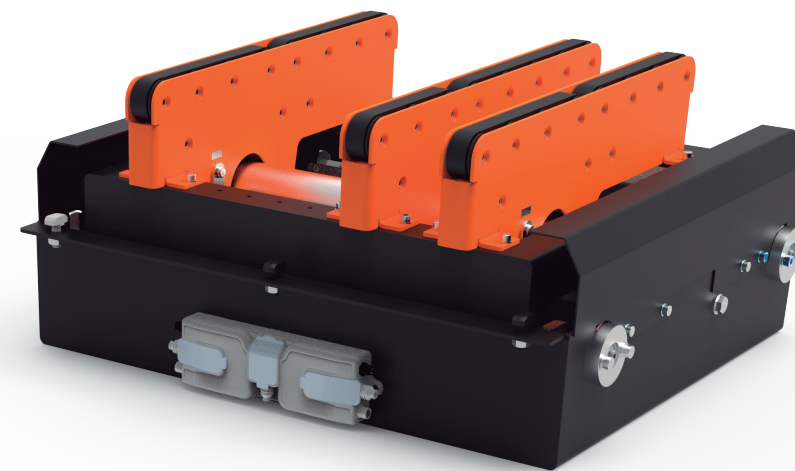
Avda José Villafranca
Melgar 5, 7
14500 Puente Genil
(Córdoba) Spain



www.rodilloscodimar.com
info@rodilloscodimar.com



+34 957617563

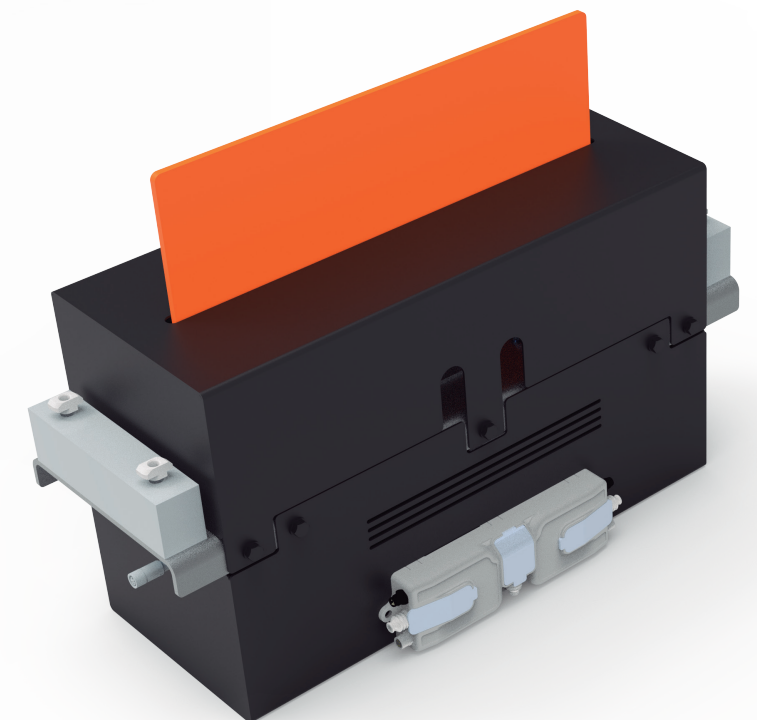


IMC AU TRANSFER

Our belt transfer modifies the trajectory 90° in the merchandise coming from a road of rollers to another. This machine interrupts the directional flow to convert a direction into a perpendicular option. It has sensors.

IMC AU STOPPER

The Codimar stopper stops the transport of the merchandise coming from a roller conveyor to another. This machine interrupts the directional flow to meter transport. It has sensors.



IMC AU DIVERTER

SLD-24V diverter in row of one is a module integrable that diverts the load of the high speed conveyors.





IMC **MOTORIZED**

The DC roller conveyor allows the transportation of goods is done in accumulation without pressure.

Each autonomous section operates through a roller motor connected between polyV rollers.

IMC AR1 **STRAIGHT**

IMC AR5 **ALIGNING**

The aligning or alignment roller conveyor redirects the merchandise diagonally with respect to the direction of transport to the side making come across a special guide for it.

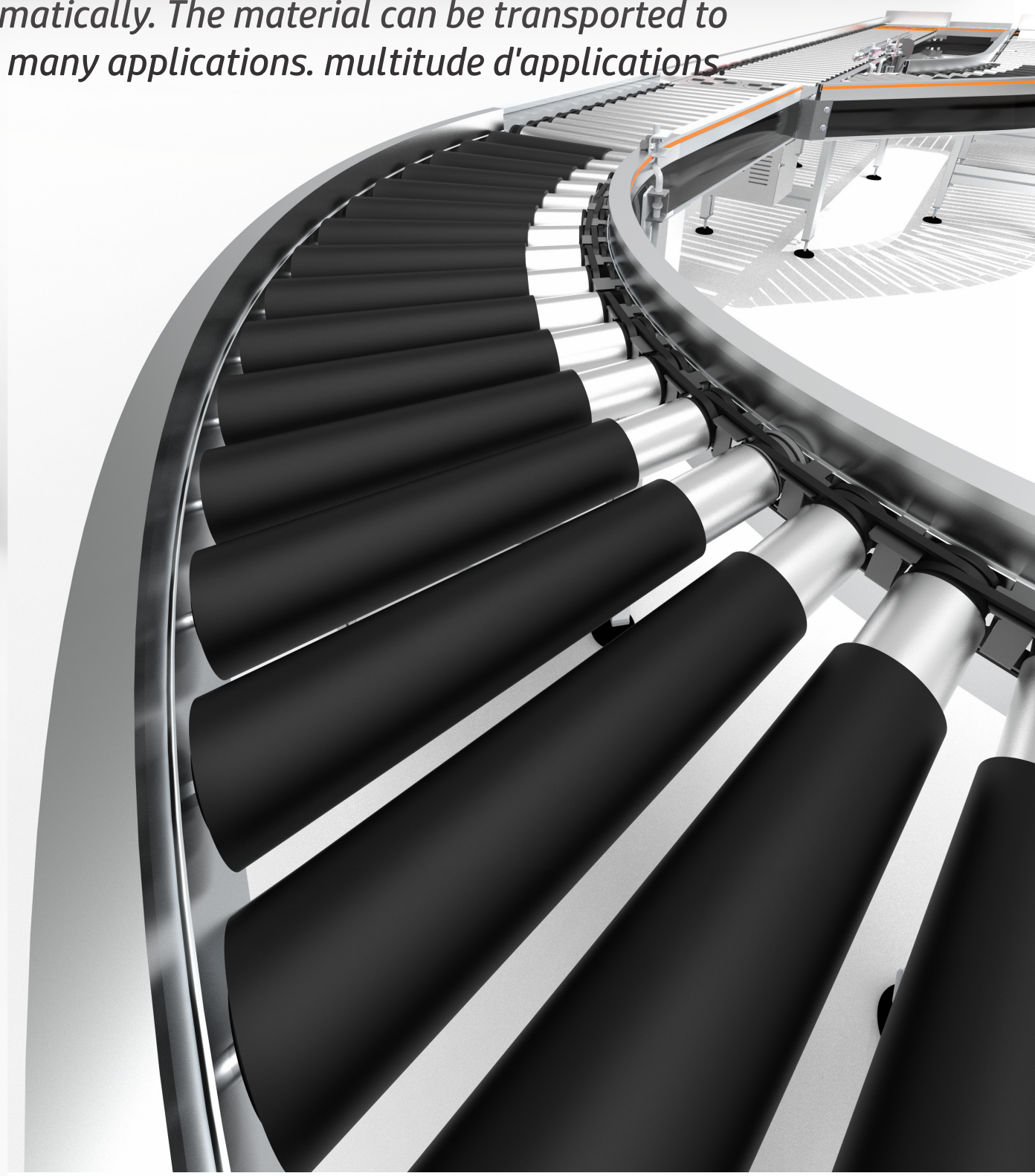
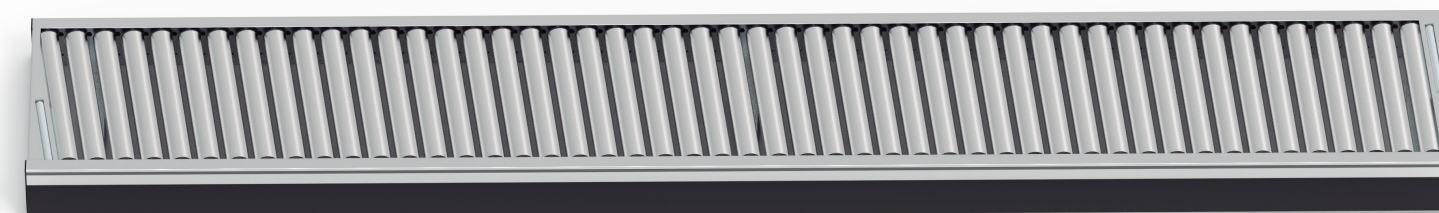
IMC motorized roller conveyors transport products automatically. The material can be transported to effortless long distances and can be found in many applications. multitude d'applications.

IMC AR2 **CURVE**

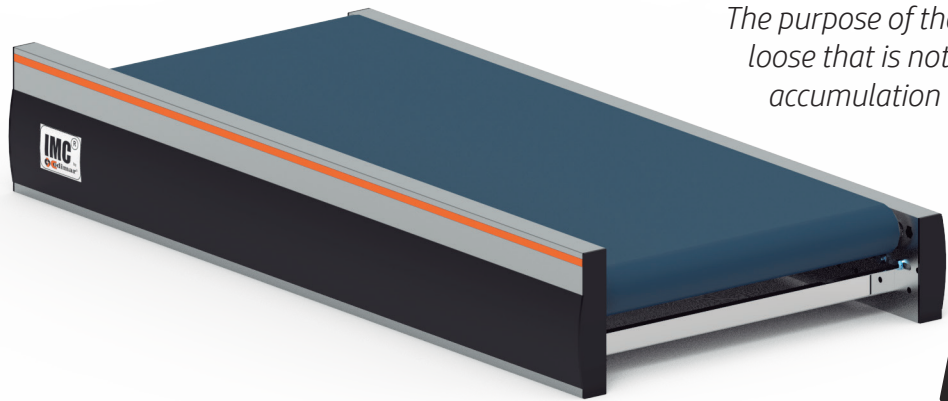
The DC curve roller conveyor, change shipping address of the load. Its conical rollers allow it to be stored the orientation between the lateral faces. The transport is done in accumulation without pressure. Each section operates from of a motorized roller between polyV rollers.

IMC AR3 **IN/OUT**

The DC curve roller conveyor, directs cargo transportation. your drive consists of a roller motor connected to the rollers through of polyV belts

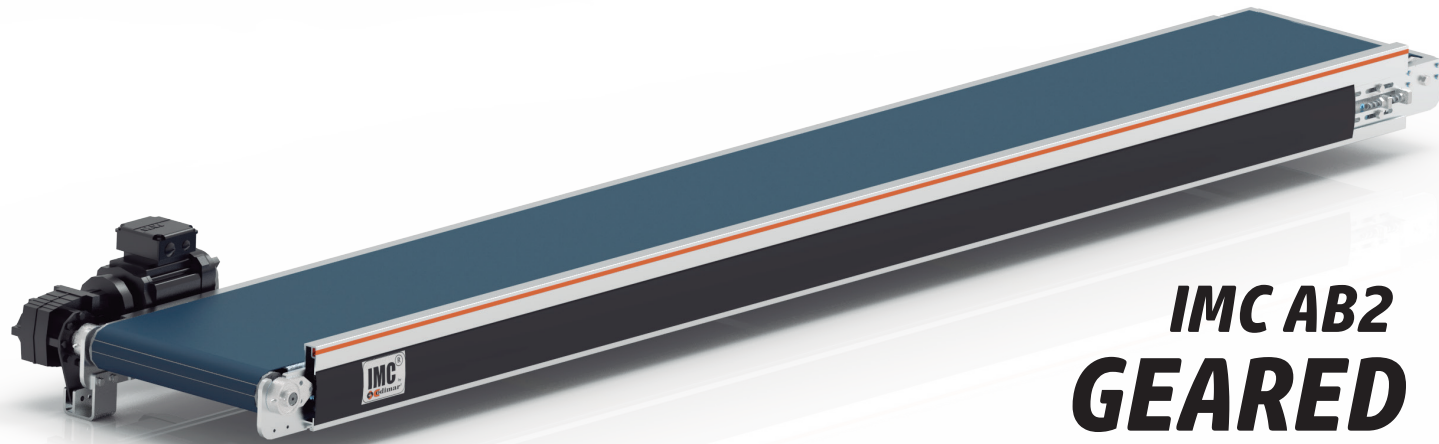


IMC BELT CONVEYOR



The purpose of the belt conveyor is to move the merchandise loose that is not suitable for rollers. It has bands by zone of accumulation without pressure. This conveyor is powered mainly with motor roller.

IMC AB1 BELT ROLLER MOTOR

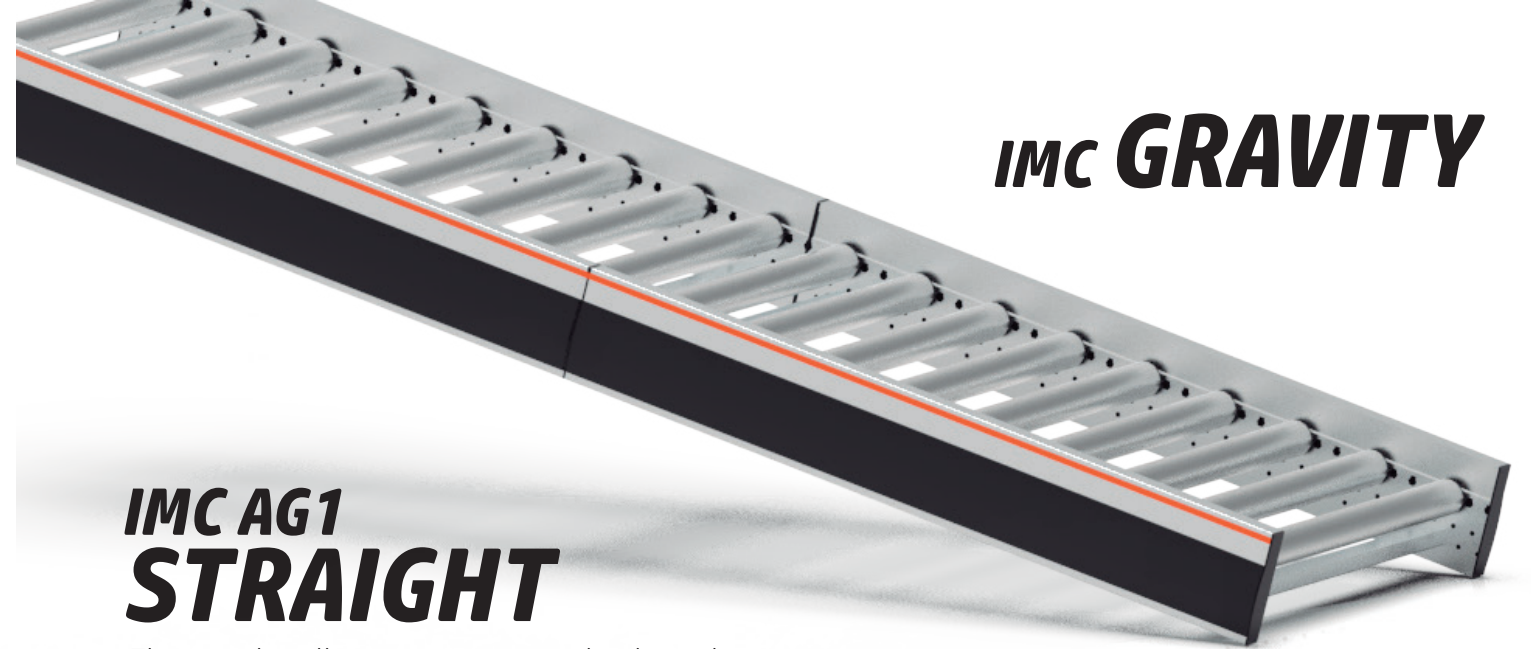
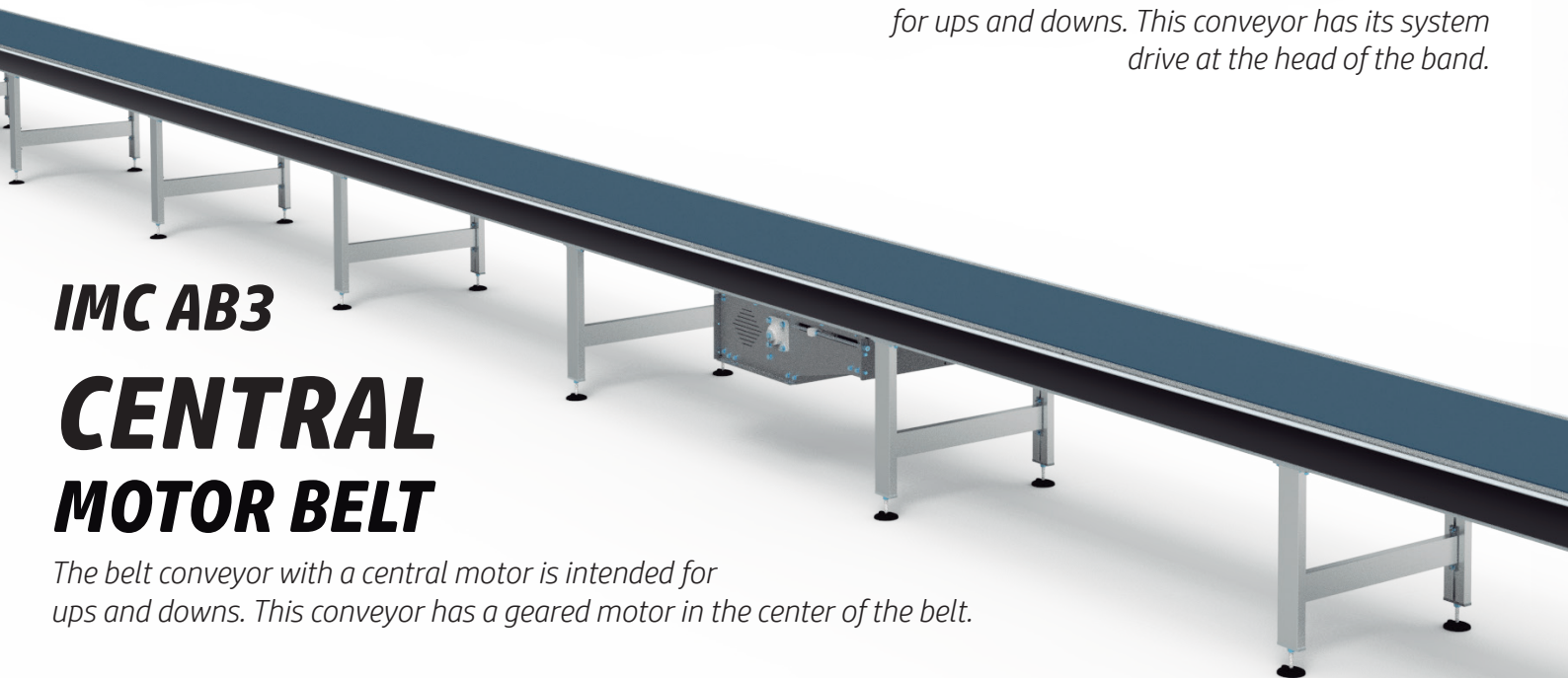


IMC AB2 GEARED MOTOR BELT

The belt conveyor with geared motor is also intended for ups and downs. This conveyor has its system drive at the head of the band.

IMC AB3 CENTRAL MOTOR BELT

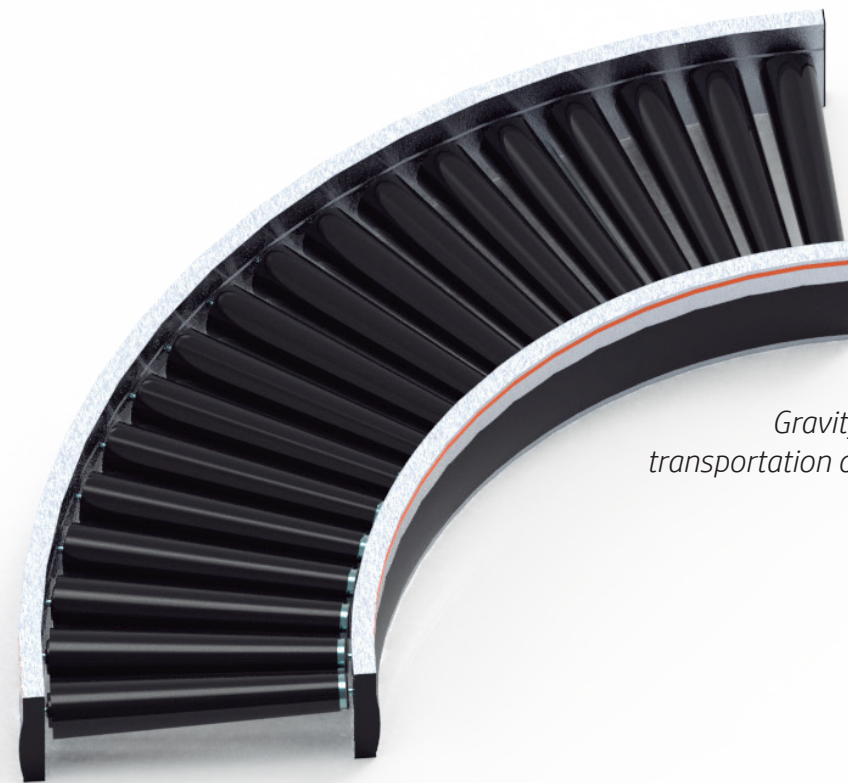
The belt conveyor with a central motor is intended for ups and downs. This conveyor has a geared motor in the center of the belt.



IMC GRAVITY

IMC AG1 STRAIGHT

The straight roller conveyor moves thanks to the force of gravity. It is used as an assembly and order preparation line.



IMC AG2 CURVE

Gravity roller curve that modifies the direction of transportation of the merchandise. Coated Tapered Rollers thermoplastic keep the orientation of the merchandise between the sides. Loads that move manually.

IMC AG3 BALLS TABLE

The ball table transports horizontally and in any direction very easily the merchandise manually. special for posts work and control. Mounted on a profile standard to facilitate connections with other conveyors.

